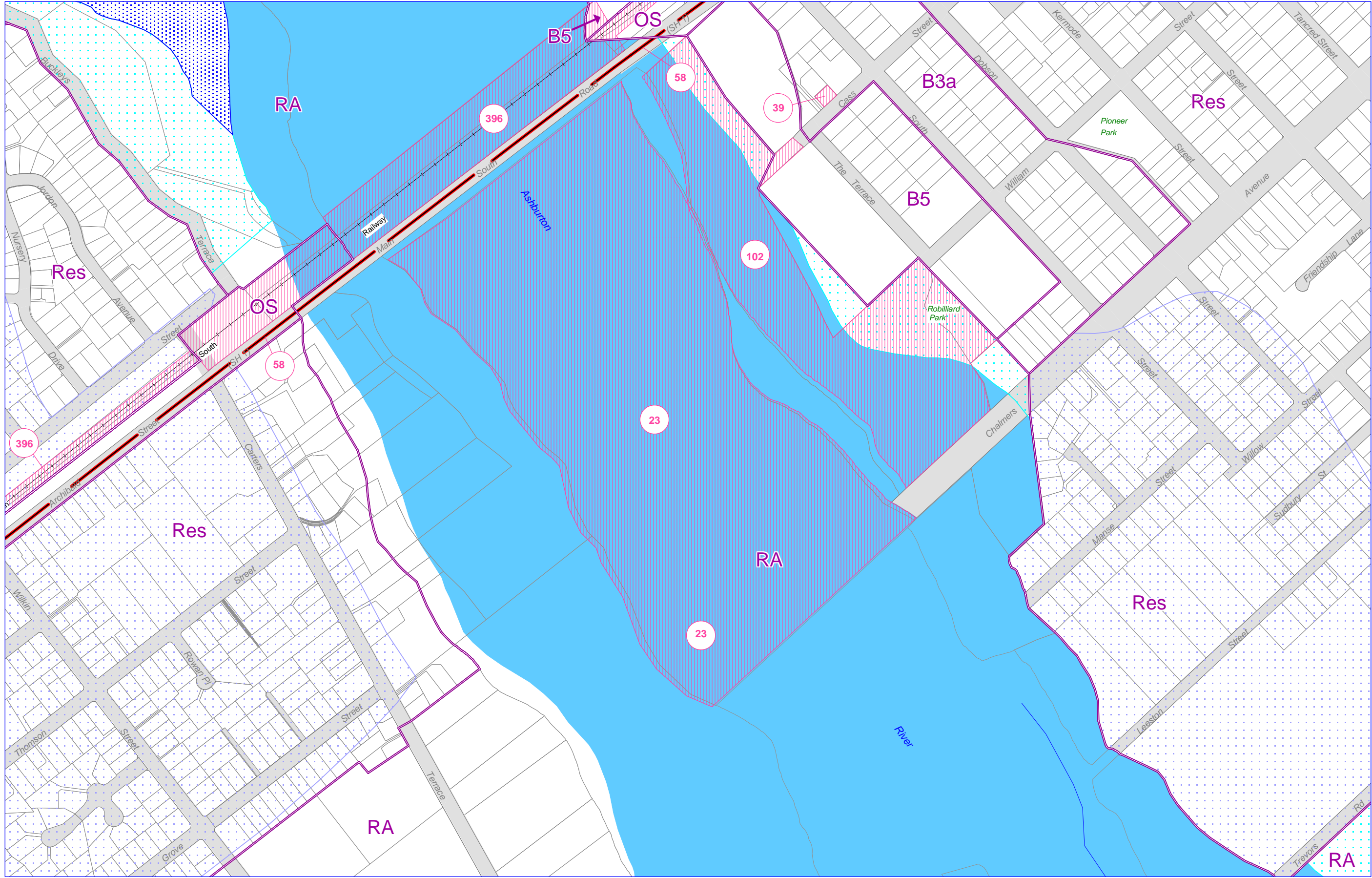


Cadastral information derived from Land Information New Zealand's Digital Cadastral Database (DCDB). CROWN COPYRIGHT RESERVED. Digital Licence No. 133563-01.

<b>Map</b> <b>63</b> Ashburton District	59	60	<b>Ashburton District Plan</b> Scale: 1:5,095 at A3 NORTH  Prepared By: Computer Services Department, Ashburton District Council May 2008	<b>KEY</b> <b>Areas / Sites of Significant Nature Conservation Value</b> Group 1 Group 2 Group 1, 2, 3, or 4	Class I, II & III Lands Shelter Belt Areas Scheduled Activities	Heritage Items Heritage and Notable Trees Geopreservation Sites	Zone Boundary District Boundary High Voltage Transmission Lines	Altitudinal Land Use Line (900m a.s.l.) Extensions to the Altitudinal Land Use Line above 900 a.s.l.
	62	63						
	65	66						



Cadastral information derived from Land Information New Zealand's Digital Cadastral Database (DCDB). CROWN COPYRIGHT RESERVED. Digital Licence No. 133563-01.

<b>Zones</b> B1 - Business 1 B2 - Business 2 B3a- Business 3a B3b- Business 3b B3c- Business 3c B3d- Business 3d B4 - Business 4 B5 - Business 5 B6 - Business 6 B7 - Business 7 B8 - Business 8 B9 - Business 9 OS - Open Space RA - Rural A RB - Rural B RC - Rural C RES- Residential RR - Rural Residential TS - Township AQ - Aquatic Park		<b>Areas of Outstanding Landscape</b> <b>Areas of Significant Landscape</b> <b>Designations</b> (17)		<b>Zone Boundary</b> <b>District Boundary</b> <b>State Highway Designation</b>		<b>Flooding</b> <b>River Channels (High Risk)</b> <b>Adjoining Land (High Risk)</b> <b>All Legal Roads are Deemed to be Designated</b>		<b>Low Risk</b> <b>Residential Flood Areas</b>		<b>Ashburton District Plan</b> Scale: 1:5,095 at A3 NORTH 200 0 m Prepared By: Computer Services Department, Ashburton District Council May 2008		<table border="1"> <tr><td></td><td>59</td><td>60</td></tr> <tr><td>62</td><td>63</td><td>64</td></tr> <tr><td>65</td><td>66</td><td></td></tr> </table> <b>Map 63</b> <b>Ashburton District</b>			59	60	62	63	64	65	66	
	59	60																				
62	63	64																				
65	66																					